



The Town Crier

A DTE-ITP MONTHLY NEWSLETTER

Explore the rich new world of **PETROTREK-FINDER** - Ifeanyi Ofili

Having access to the right data at the right time is now possible with the newly enhanced PetroTrek introduced recently. We have broken the barrier to logon to multiple databases to access different data types typically owned by different disciplines. The New World of PetroTrek enables you to view integrated data types from anywhere on a single web browser (URL <http://phcw255.phc.spdc.shell.ng/petrotrek2004/index.html>) and access is as easy as navigating web pages. In addition, you



Ifeanyi Ofili

can also view Base map, correlation plot with logs, production bubble plot, reservoir performance plot and so on. To continue our journey towards integrated data access from anywhere, we must sustain the current active partnership with the data owners.

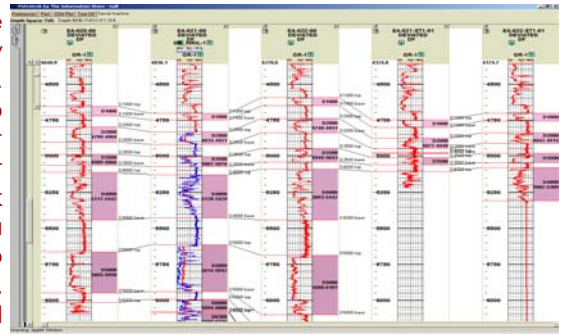
In this edition of the TC, we will take a little navigational journey into various MDS and CDS (Master Data Store and Corporate Data Store) with our data management tool PetroTrek (alias **Ododo Oro, One is One**), as presently configured on your desktop.

Due to space constraints, we shall only navigate through Field, Well, and Well Report pages. We promise to navigate with you through the other pages in subsequent editions.

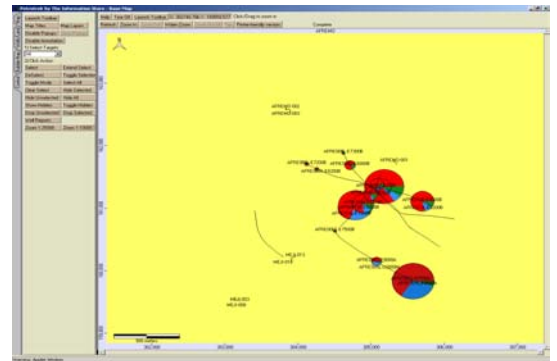
The Field page offers a single place to store and maintain all field information. From the field page access field production charts, bubble plots, base map and analyse production trends and estimate reserves. Access and get reservoir reports and other field related documents. These pages display the latest and most accurate information by directly accessing it from our corporate databases.

The Well Report page provides you with about 35 standard subsurface well reports, and the list will keep growing as different data types are migrated into the databases. Go ahead try making a correlation plot with logs.

The Well Page provides one page access to all the information associated to a particular well.



Correlation Plot with evaluated Logs



Production Bubble Plot of Afremo Field

Some examples of the type of information supported include: general well information in the form of a page header, zonation information (picks, contacts, deviation, TZ etc), digital well logs, production charts viewers, well schematic diagrams, panels and associated well documents.

- To be continued next edition

OUR HSE TIPS FOR AUGUST

Working in an awkward position will only get you to a physician.

If your workplace is a disgrace report it.

Ergonomics show the way to have a safe workday

Ergonomics is your friend. It can help your body end to end.

Be Ergonomically Correct, So Your Body Won't Object.

- Magnus Kanu



Subsurface Data Management Day
Now Monday August 4, 2003